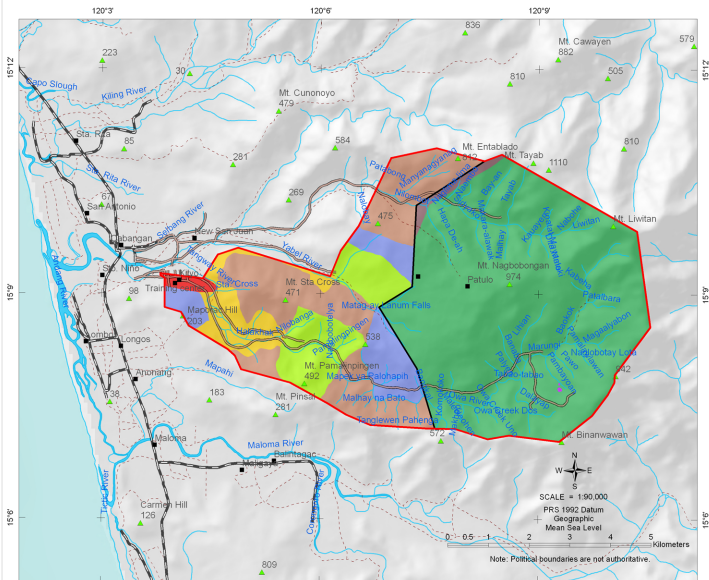


# CADT ZONING (2012) Certificate of Ancestral Domain Title of the Maporac Ayta Organization in Cabangan, Zambales Province



### Legend:

- |  |   |   |
|--|---|---|
| <span style="border: 2px solid red; padding: 2px;"> </span> Maporac Ayta CDT | <span style="color: green;">▲</span> Mountain peak  | <span style="background-color: brown; border: 1px solid black; width: 20px; height: 10px; display: inline-block;"></span> Reforestation |
| <span style="border: 1px solid black; padding: 2px;"> </span> ICCA           | <span style="color: black;">■</span> Landmarks  | <span style="background-color: yellow; border: 1px solid black; width: 20px; height: 10px; display: inline-block;"></span> Agroforestry |
| Road   | <span style="background-color: lightgreen; border: 1px solid black; width: 20px; height: 10px; display: inline-block;"></span> CADT Management Zones (2012) | <span style="background-color: green; border: 1px solid black; width: 20px; height: 10px; display: inline-block;"></span> Agriculture   |
| Dirt road  | <span style="background-color: lightgreen; border: 1px solid black; width: 20px; height: 10px; display: inline-block;"></span> Protected area, ICCA         | <span style="background-color: blue; border: 1px solid black; width: 20px; height: 10px; display: inline-block;"></span> Multiple use   |
| Trail  | <span style="background-color: purple; border: 1px solid black; width: 20px; height: 10px; display: inline-block;"></span> Protected area, ritual area      | <span style="background-color: red; border: 1px solid black; width: 20px; height: 10px; display: inline-block;"></span> Residential     |
| River  | <span style="background-color: darkbrown; border: 1px solid black; width: 20px; height: 10px; display: inline-block;"></span> Protected area, reforestation |   |

\*Maporac Ayta CDT R03-CAB-0110-151 = 5,430.2244 has  
ICCA = 3,259 has or 60% of CADT

CADT Management Zones (2012)	Hectares	Percent
Protected area	3,203	59
Reforestation	1,031	19
Agroforestry	464	9
Multiple use	368	7
Agriculture	266	5
Protected area, reforestation	55	1
Residential	42	1
Protected area, ritual area	1	0.02
<b>Total</b>	<b>5,430</b>	

### Data Sources:

Becker, J. J., D. T. Sandwell, W. H. F. Smith, J. Braud, S. Binder, J. Copner, D. Fisher, J. France, R. Hagglund, S. Kim, R. Larkin, K. Marks, J. Nathan, A. Pritchard, G. Shamboni, S. Taniwiri, J. van Rooij, G. Wallace, P. Willmott, "Global Bathymetry and Elevation Data at 30 Arc Seconds Resolution: SRTM30\_PLUS V1," Marine Geology, 324, 355-371, 2009.

Bureau of Land Management, "Global Administrative Areas," 2007.  
DBIR/PAIB, "Land Cover," 2009.  
DBIR/PAIB, "Certificate of Ancestral Domain Claims," 1998.  
ICCA Inventory GIS/RS survey conducted by Maporac Ayta Organization, GISMAP and PAIBD on 6 December 2011.  
Janita, A., H. Reuter, A. Nelson, E. Guenera, "Wide-Band satellite

SRTM data V4, International Centre for Tropical Agriculture (CIAT), available from <http://srtm.csi.cgiar.org/>, 2008.  
NASA Land Processes Distributed Active Archive Center (LP DAAC), "ASTER L1B," USGS/Earth Resources Observation and Science (EROS) Center, Sioux Falls, South Dakota, 2011.  
National Commission on Indigenous Peoples Region 3, "Maporac Ayta

Organization Certificate of Ancestral Domain Title," 4 October 2011.  
Land uses, sources of river and creek, trails, roads and landmarks were derived from the Maporac Ayta Organization 3D Model conducted on August 1999 and updated on 31 March 2011.  
Rivers, roads, trails, public areas and mountain peaks from National Topographic Sheet No. 7073-3 San Francisco.



Map Production: PAFIG 14 February 2012  
71 Malabak St. Bldg. Pinyanhan Quezon City 1100  
652-207-6500  
pafig@skybroadband.com.ph, pafig@yahoo.com  
www.pafig.org.ph